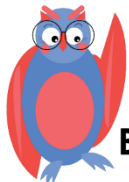




# VOTES FOR SCHOOLS

## Primary KS1



**Be informed.**



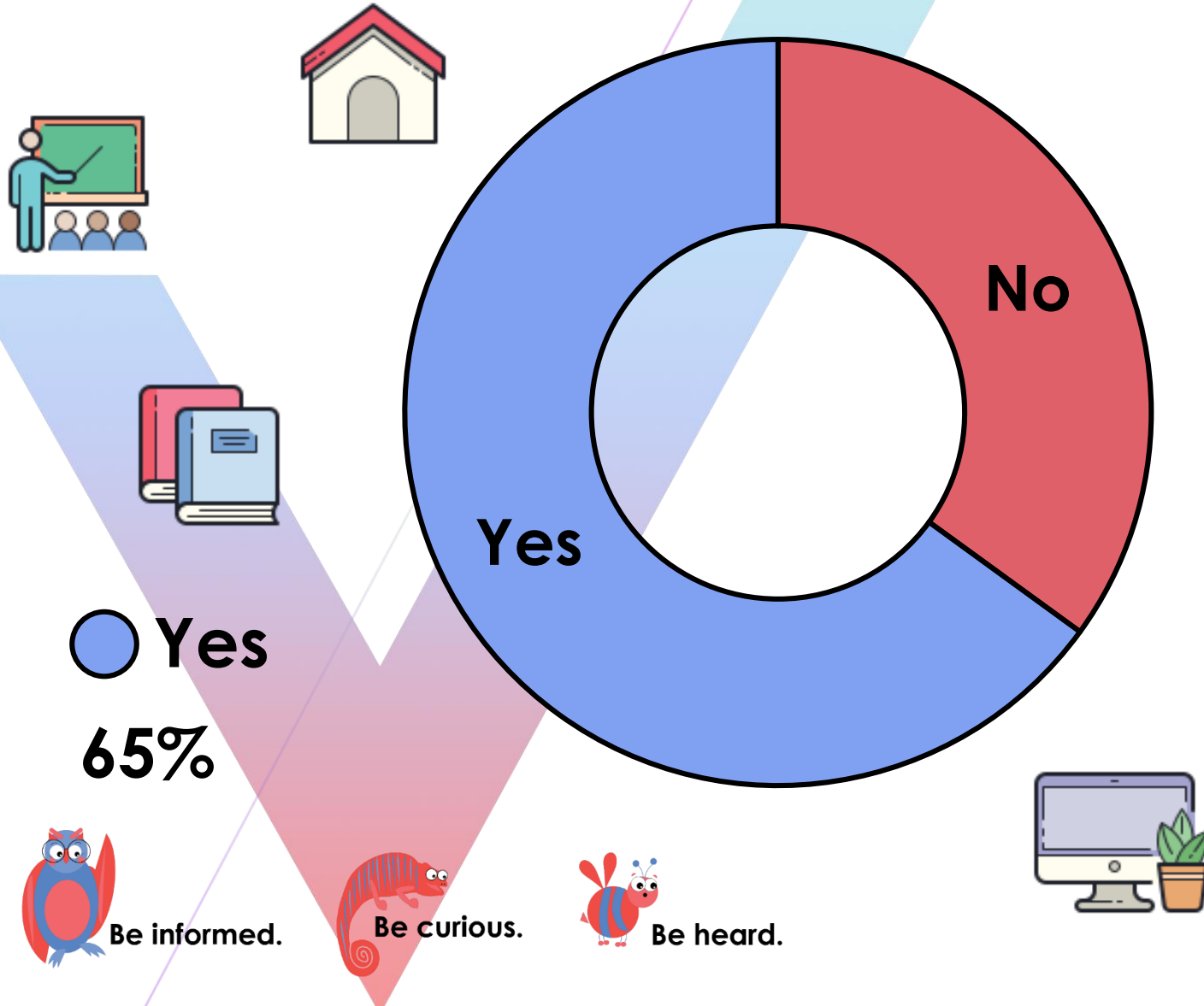
**Be curious.**



**Be heard.**

# Here's how you voted!

## Will learning ever be the same again?



● No  
35%

● Yes  
65%



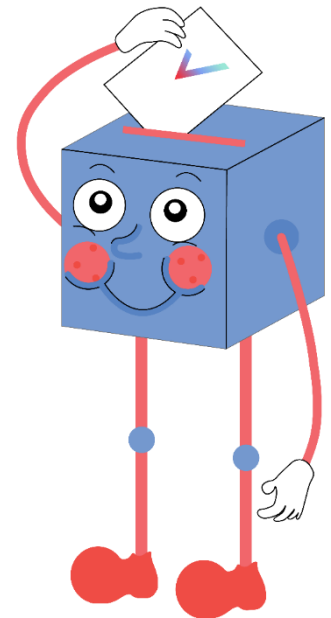
Be informed.



Be curious.



Be heard.





## Starter: Have you tried it?



### Pair task (2-3 mins)

Take a look at these different products.  
Which have you tried before?



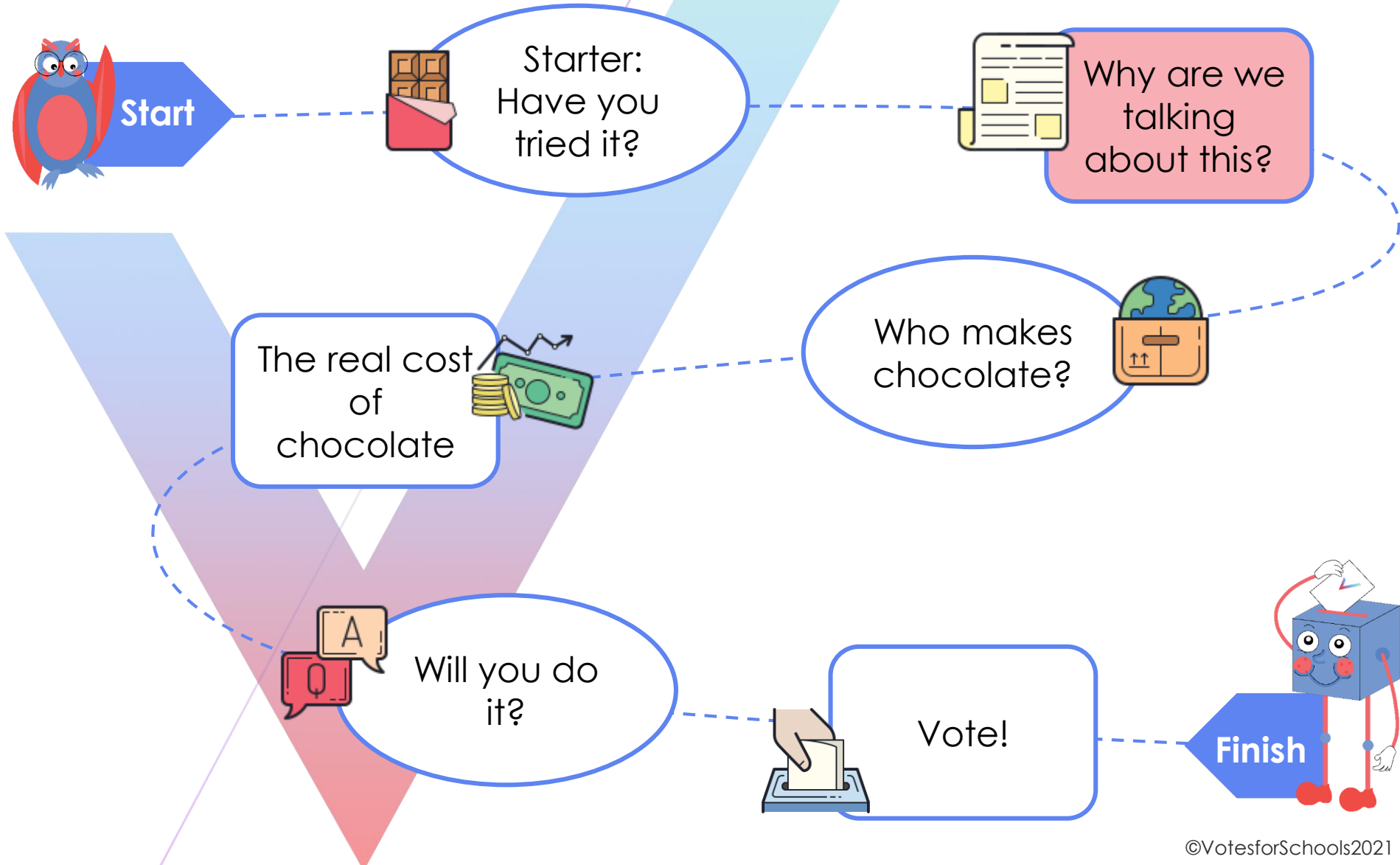
### Challenge:

Can you guess what we will be talking about today based on these pictures?

# Would you pay more for chocolate?



# Our learning journey for this week!





# Why are we talking about this?



Did you know that **chocolate is one of our favourite treats** here in the UK?



## Pair task (2-3 mins)

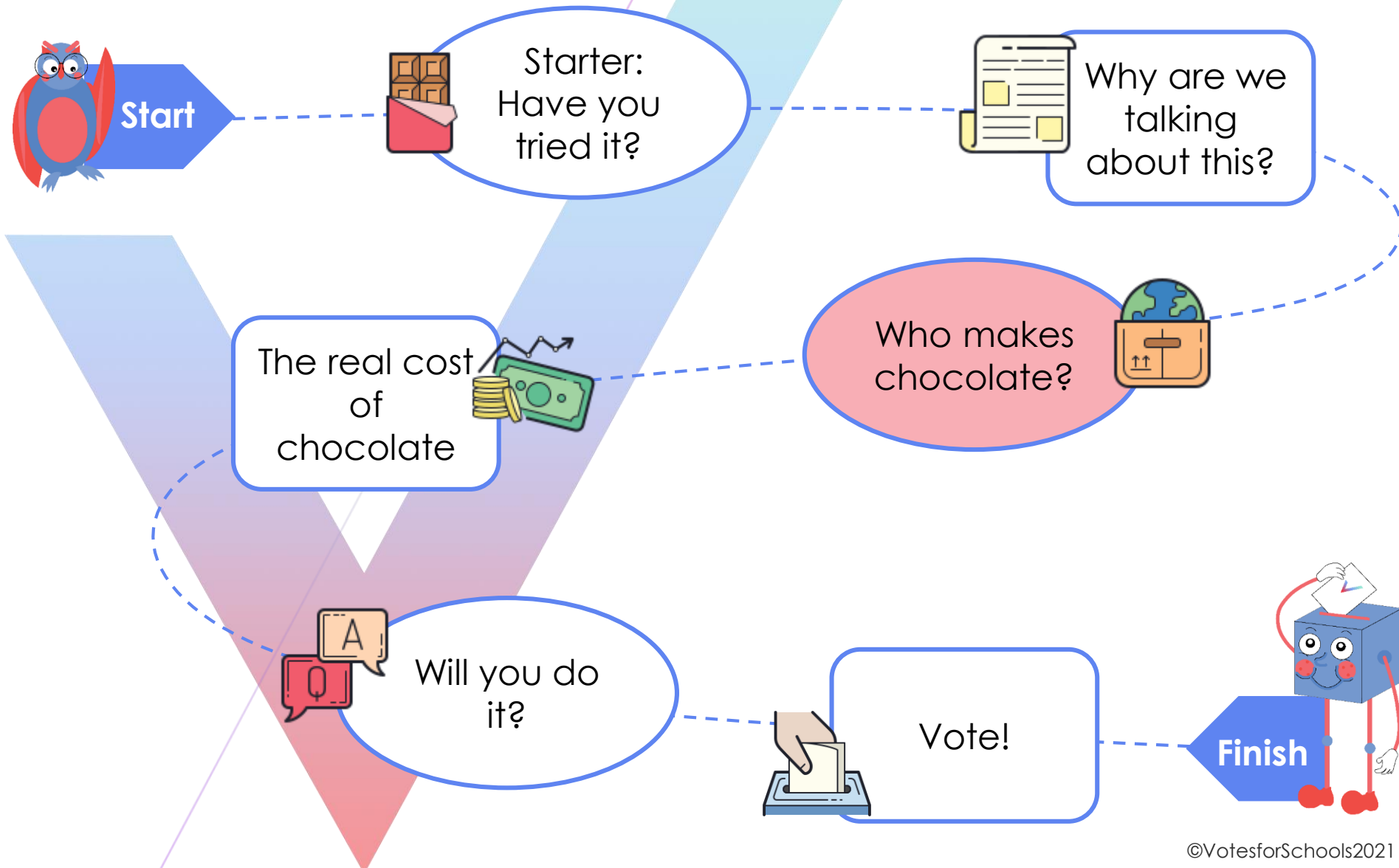
Do you like chocolate? If you do, tell your partner or adult what your favourite kind of chocolate is!

Because **Easter is only 5 week away**, you might see lots of **Easter eggs** when you next go shopping too!



But this **isn't the only reason** that we're talking about chocolate this week! From 22<sup>nd</sup> February-7<sup>th</sup> March, it is also **Fairtrade Fortnight 2021**.

# Our learning journey for this week!





# Who makes chocolate?



## What do you think? (2-4 mins)

Do you know where chocolate comes from? Use these pictures to help you guess, then click to find out...



### Farmers

Chocolate comes from a tree called the **cacao tree**. The trees only grow in very hot countries.

When the trees are ready, **farmers** cut down these **pods**. Inside of them are **cacao beans**.







# Who makes chocolate?



## Producers

Then, the cacao beans need to be **dried out in the sun**. Producers check on them often to make sure they **dry properly**.

## Transporters

After they are dry, the **beans are sold** to different factories around the world. They are **sent on a boat** to their new country.



## Factories

When they arrive, **a chocolate factory** will add sugar, milk and other ingredients to the cacao beans **to turn them into chocolate bars**.



# Who makes chocolate?



## Advertisers

**Advertisers** then receive the chocolate and have to come up with **images, videos and packaging** to make us want to buy it!



## Shops

When the chocolate bar is **ready to be sold** in its new, mouth-watering packaging, it is sent to **supermarket shelves**, ready for us to eat!

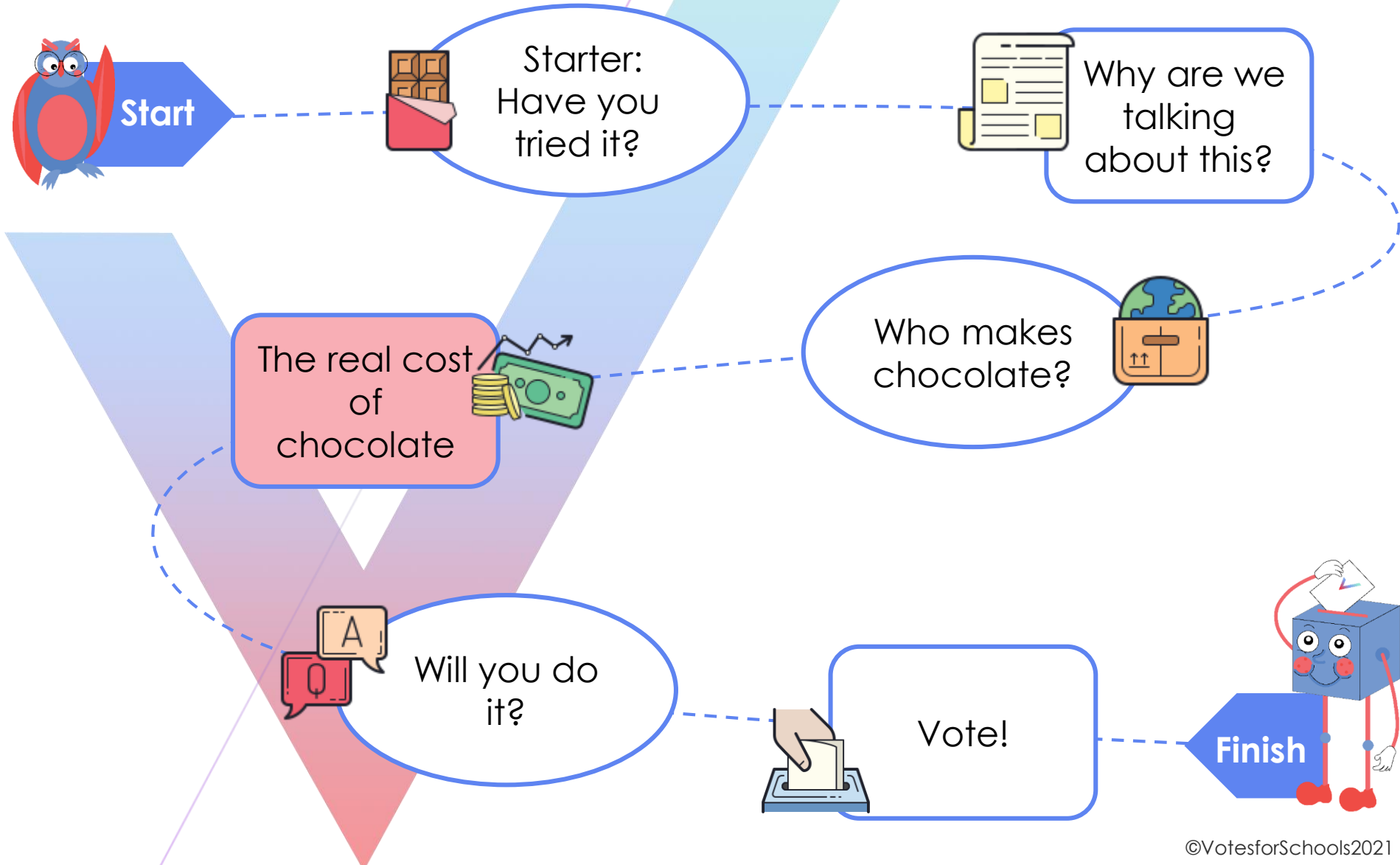
### A job for you? (2-3 mins)

If you could choose, which one of these jobs would you like to do and why?

### Challenge:

Which of these jobs do you think is the hardest to do and why?

# Our learning journey for this week!





# The real cost of chocolate

There are lots of people needed to help make chocolate, but **how much do they all get paid?**

## How much? (3-5 mins)

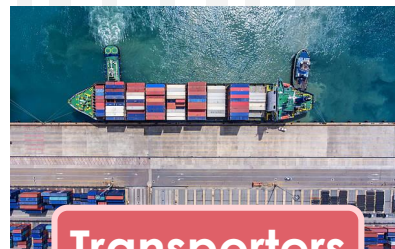
If a chocolate bar costs £1, how much do you think each of these people get paid? With a partner, match the amounts at the bottom to each person, or head to the next slide!



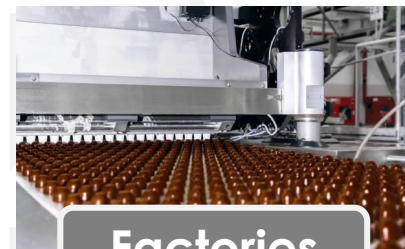
Farmers



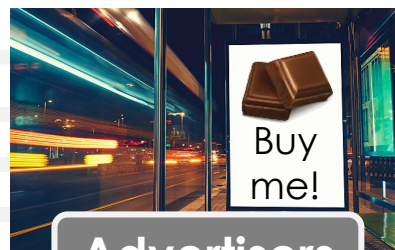
Producers



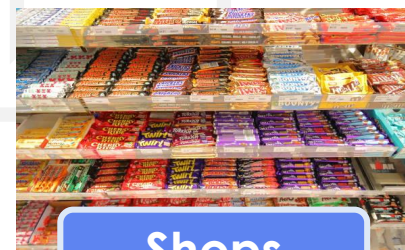
Transporters



Factories



Advertisers



Shops

6p

45p

8p

35p

2p

4p





# The real cost of chocolate



## Answer time! (2-3 mins)

While your teacher reads out the answers, **stand up** if you think it is **unfair** for this person to receive this much, and **stay sitting down** if you think it is **fair**.

This is **fair**!



This is **unfair**!

Farmers



Producers



Transporters



Factories



Advertisers



Shops





# The real cost of chocolate

If we buy **Fairtrade chocolate**, the farmers are paid a fair amount of money for their chocolate.



They can spend this money on their **family** and **their community**. However, it can mean that chocolate **costs us a little more** when we buy it here.



If something is **Fairtrade** you will find a little green and black sticker or logo on it!



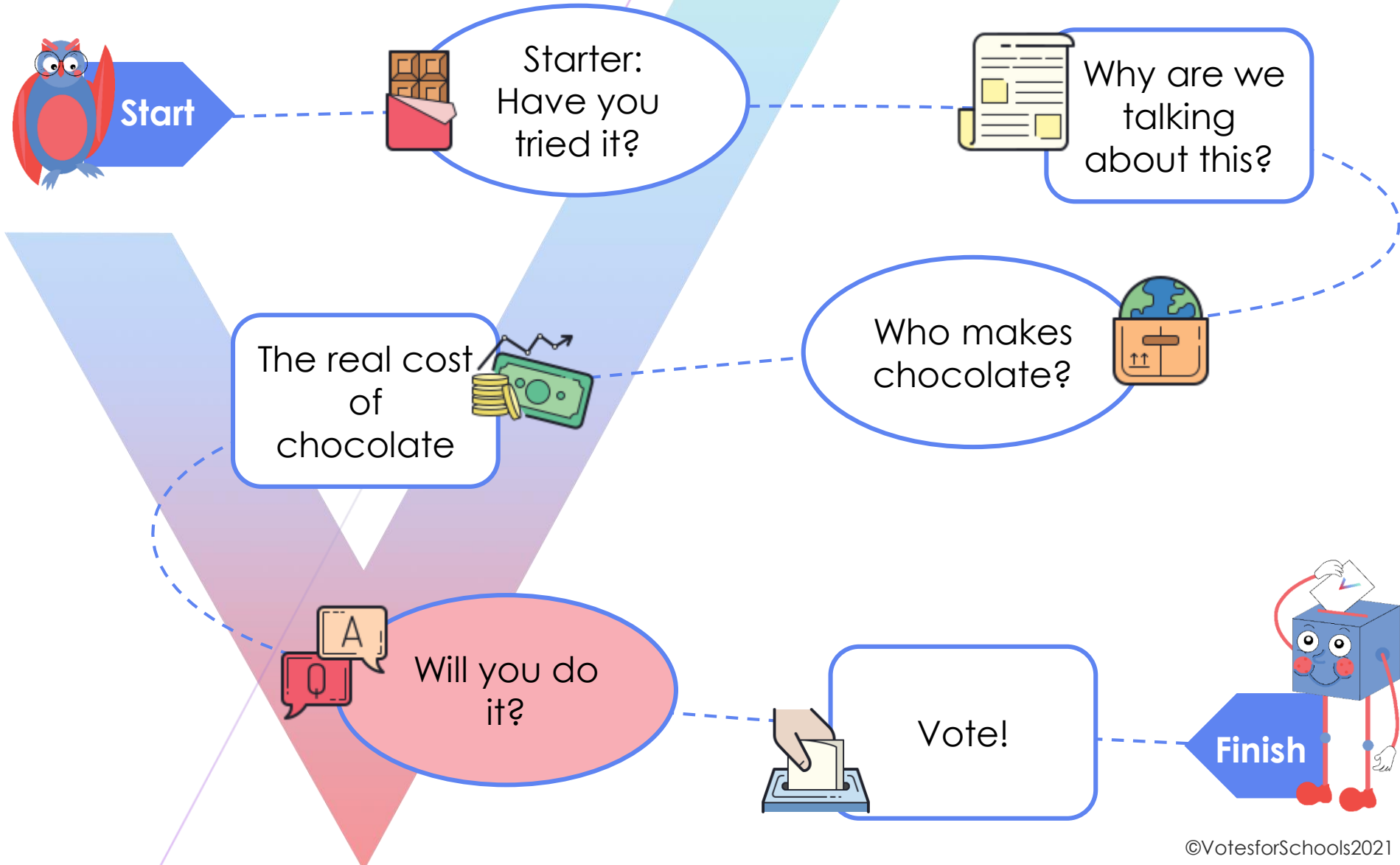
## Challenge:

If you're at home at the moment (or when you get home), look in your cupboards or fridge. Can you find something that has the Fairtrade symbol on it? You might find it on bananas, chocolate, tea or flowers.





# Our learning journey for this week!





# Will you do it?



## A personal choice... (5-8 mins)

On the next six slides, you are going to see some different opinions about chocolate. For each one, show whether you agree by putting your thumbs up or whether you disagree by putting your thumbs down.



I **agree** with this!

I **disagree** with this!





# Will you do it?



We should buy **fairly traded chocolate**, even if it **costs more** money.

If I buy chocolate that **costs more money**, I **won't be able to buy** as much.



I **agree** with this!

I **disagree** with this!





# Will you do it?



The **shops make lots of money** when we buy chocolate – they should **give more** to the farmers. It's **not our job!**



Buying chocolate from people who don't pay farmers properly is **selfish**. We need to **stop** this!



I **agree** with this!

I **disagree** with this!





# Will you do it?



We **spend extra money on chocolates for presents**, so we can't we **spend more on our own** chocolate?

If I only buy **fairly traded chocolate** I **won't get to eat** all of my favourite treats, so I **won't do it!**

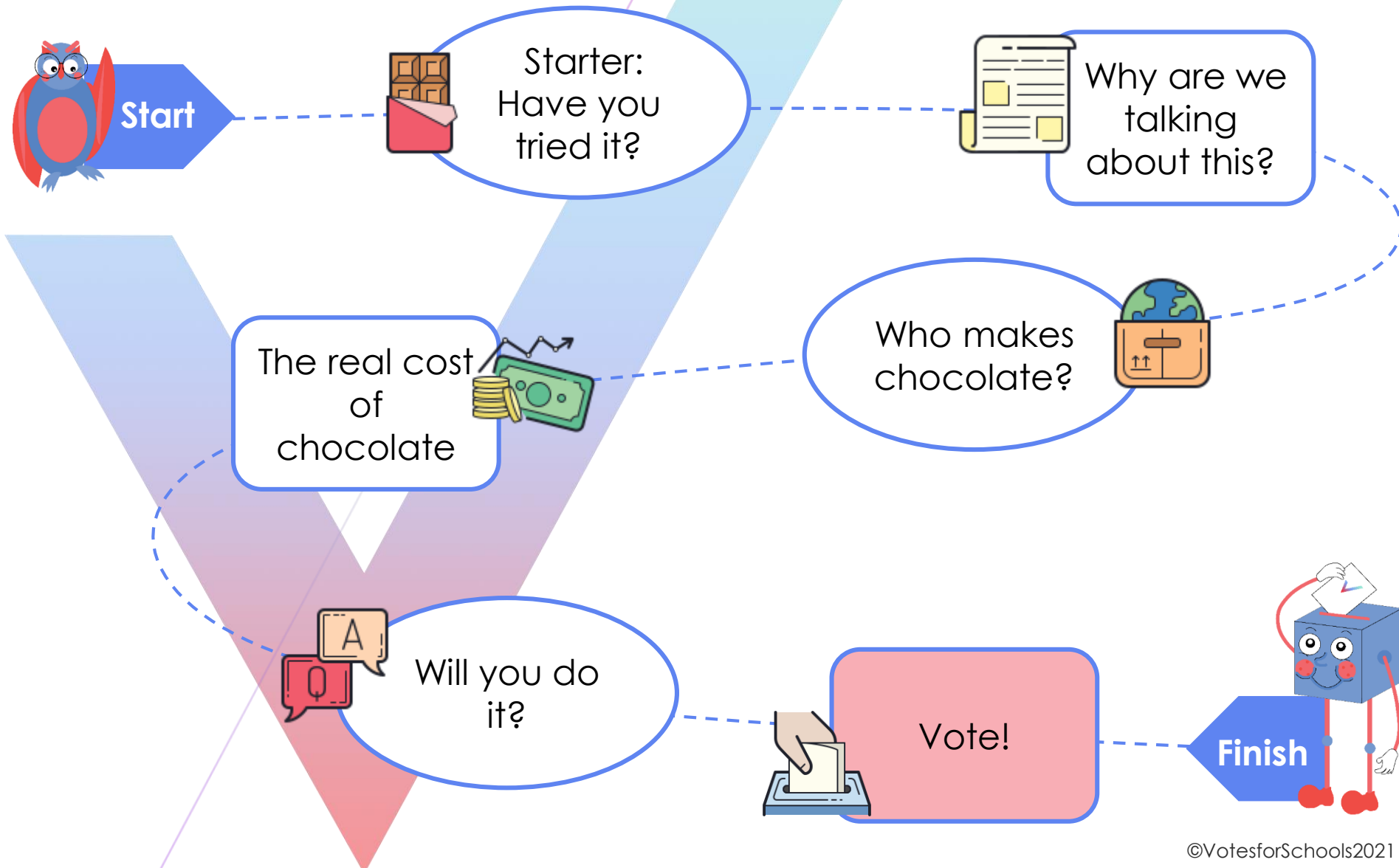


I **agree** with this!

I **disagree** with this!



# Our learning journey for this week!





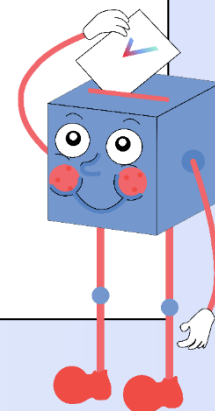
# Would you pay more for chocolate?



Yes	No
<ul style="list-style-type: none"><li>• I would pay more so that farmers are paid fairly.</li><li>• If we all stop buying chocolate that isn't made fairly then the unfair chocolate wouldn't sell, so everyone would pay fairly.</li><li>• We buy expensive chocolates for presents, so why not by them for ourselves too?</li><li>• ...</li></ul>	<ul style="list-style-type: none"><li>• If I only bought Fairtrade chocolate, I wouldn't be able to eat all of my favourite treats!</li><li>• It's not our job to worry about farmers – the shops should be paying them more, not us.</li><li>• Lots of people won't have enough money for expensive chocolate.</li><li>• ...</li></ul>



For more on this topic, check out this week's **assembly!**



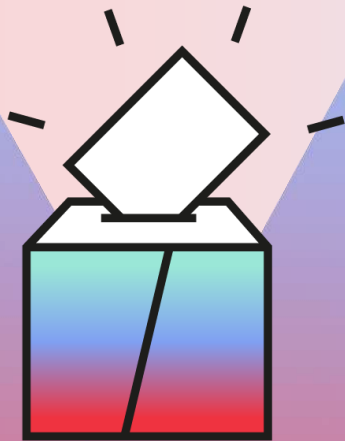


# Vote!



## In the classroom?

**Log your class's votes now at:**  
[www.votesforschools.com/login/teacher](https://www.votesforschools.com/login/teacher)

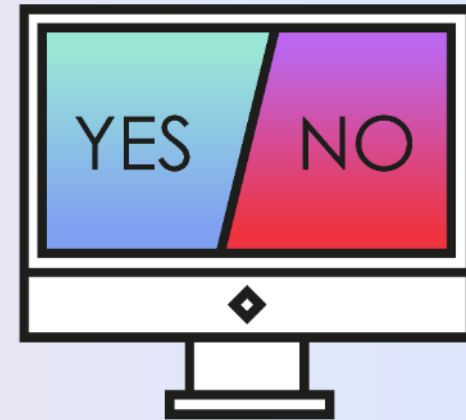


### Not sure how?

Click the ballot box to see a video on how to log your votes!

## At home?

**Follow this link to vote:**  
<https://www.surveymonkey.co.uk/r/vfs-primary-fairtrade>



### Having trouble?

Copy and paste the link into your internet browser!

If you have any issues, feedback or comments, email [primary@votesforschools.com](mailto:primary@votesforschools.com).